

# James Gillespie's High School



# Newsletter

## Message from the Head Teacher

August 2005

We are delighted to welcome you all to the new session.

A particular welcome is given to parents whose first child is joining the school. Parents of all S1 students are invited to an informal social evening to chat to senior staff, guidance staff and office staff on Tuesday, 6th September from 19:15—20:45hr in the school library. A letter will be sent home with S1 students giving details of this event nearer the time. There will be another opportunity in the first few weeks of term for parents of S1 students to see a class presentation. Details will be issued to all in S1.

We look forward to a new session in which every-

one in our school community strives to:

- Raise standards of achievement, attainment and commitment to learning
- Improve the already positive and hard-working ethos
- Improve standards of behaviour, attendance and timekeeping
- Develop in students a commitment to respect and to care for others

Our school is committed to working with parents and students to achieve these aims and I encourage you to participate in the life of the school so that you work positively with us. The School Board and The Parent

Teacher Association are the main parent bodies, but there are many other events for parents, which are detailed in the school calendar issued with this newsletter.

I look forward to meeting with you during the coming year as we work together to promote the best interests of the children.



*Mr. A. Wallace*

Inside this issue:

Message from the Head Teacher	1
Making the Most of School	1
Our New Student Communities	2
Student lockers	2
SportsFair	2
Comings & Goings	3
Congratulations	3
Our New School Structure	4

Special points of interest:

- ♦ **All students return to school at 08:30hr on Wednesday, 17th August. We look forward to seeing all of you again.**
- ♦ For information about the new structure of the school week see page 4.
- ♦ Get your order for a locker in early. See page 2 and the maildrop for details.
- ♦ Learn about people behind the names of our new Communities—page 2.
- ♦ Get fit—join a club. See information about SportsFair on page 2.
- ♦ Note all the important JGHS dates in your diary, see page 4.

## Making the Most of School

One of the main factors contributing to lack of attainment in a student is lateness and absence from school. Statistically there is a clear correlation between attainment and lateness/absence.

When a young person is ill, clearly they cannot and should not be at school. But, you can help us to ensure that absences are properly recorded and help us to avoid the situation where absences have not been explained by a parent or are

not known to the parent. When parents do not explain an absence from school we have to consider the possibility that this might be truancy.

Our basic expectations are that;

- Young people should arrive at school **ON TIME** (given bus timings they should probably plan to be here by 08:25hr).
- When there is illness,

parents should let us know (either by telephone, e-mail or letter), on the first day of illness, and certainly on the day your child returns to school.

Please help us to ensure that your daughter or son develops good habits of attendance and timekeeping by keeping us informed of absence and by dealing with persistent lateness.

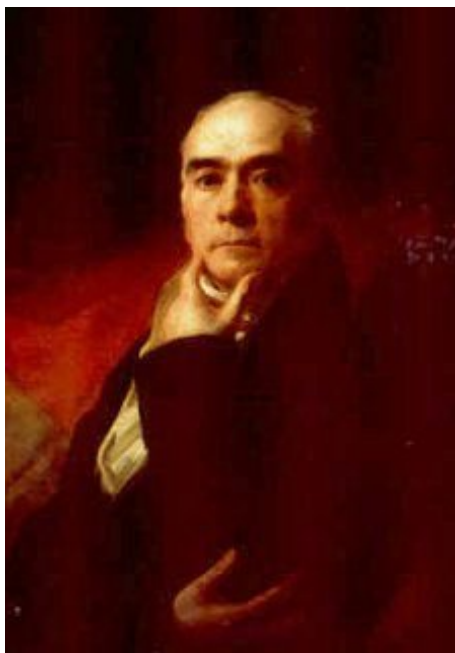
## Our New Student Communities

As part of our new structure for school life we have created three communities. All students will be assigned to one of these and where possible all siblings will be in the same community. This will simplify parents' access to Guidance staff by having only one per family.

We have chosen to name our communities after famous people who represent achievement and success in different fields of endeavour. They also represent our commitment that JGHS has both a strong Scottish and global identity.

### Raeburn Community

Sir Henry Raeburn represents the Arts. Born in 1756 in Edinburgh, he was orphaned and educated at Heriot's Hospital. He was apprenticed to an Edinburgh goldsmith and started to paint miniatures at this time. After returning from three years in Italy in 1887 he settled in Edinburgh and was soon pre-eminent among Scottish artists.



*Sir Henry Raeburn (Self Portrait)*

### Maxwell Community

Named after James Clerk Maxwell who represents the Sciences. Born in 1831 at 14 India Street, Maxwell is generally regarded as one of the greatest physicists ever. His first scientific paper was written at the age of 14 and generalized the definition of an ellipse. Einstein is on record as stating Maxwell's scientific work resulted in the most profound change in conception of reality in physics since the time of Newton. Maxwell's work united electricity and magnetism into the concept of the electromagnetic

field thus affecting almost everything we do from electric motors to the internet. His work on the theory of light led to Einstein's Theory of Relativity and to Quantum Theory.



*James Clerk Maxwell*

### Kyi Community

Named after Burmese politician Aung San Suu Kyi, represents Politics and Humanities. She was born in 1945 and is the daughter of General Aung San, a hero of Burmese independence. She returned to Burma in 1988 after studying at Oxford University. She became the leader of the National League for Democracy which went on to win 82% of the vote in the national elections. The military regime refused to give up power and Aung San Suu Kyi has spent a large part of her life under house arrest. She was awarded the Nobel Peace Prize in 1991. On 18th June 2005, the day before her 60th Birthday, Aung San Suu Kyi was awarded the Freedom of the City of Edinburgh.



*Aung San Suu Kyi*

## Student Lockers

Letters have already been issued to our new S1 students and will also be included in the summer maildrop for all year groups. We normally have enough lockers to satisfy all those students who want one but please ensure your request for a locker is returned promptly. The requests for lockers will be collected in PSE classes before Friday 26th August 2004.



## SportsFair

### Play free for a Day

Edinburgh's sports clubs are being invited to take part in a free event to attract new members

Returning for its second year, SportsFair brings Edinburgh's sports clubs and health organisations together under one roof for a day of sports displays, matches, coaching sessions and entertainment—all for free.

A free, family fun day, SportsFair is on Sunday 11th September 2005, 11:00 to 16:00 hr at Meadowbank stadium.

Clubs and health organisations can take advantage of this marketing opportunity by registering their interest with the Council. There is no charge for clubs or health organisations to take part.

The event will be marketed to families with music, entertainment, face painting and other activities included with the free entry.

SportsFair is a partnership between the Council and Edinburgh Leisure. Its aim is to raise the profile of sports clubs across the city, help them attract new members and raise awareness amongst the public of what's on offer to help them get active.

Clubs and organisations wishing to find out more can check out [www.edinburgh.gov.uk/futuresport](http://www.edinburgh.gov.uk/futuresport) or call 0131-529-7993 for information.

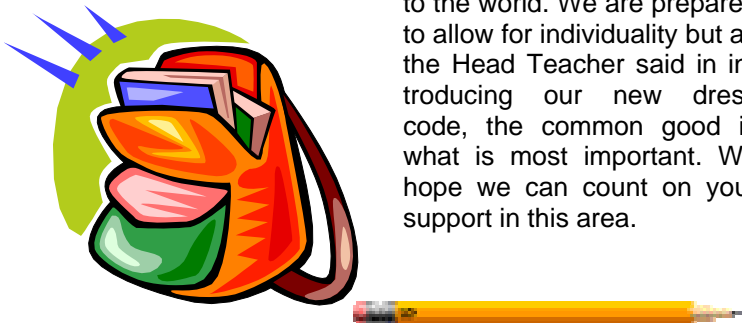
# Comings & Goings

## Dress Code

It is extremely important that students come to school appropriately dressed and ready and equipped to learn. Please ensure that your child comes to school with basic equipment every day, including a bag. It is essential that your child is prepared for the

work of the class and gets organized immediately upon entering the classroom

We have agreed as a community to a relaxed dress code but this does not permit short, midriff-exposing tops for girls or trousers for boys that expose their boxer shorts to the world. We are prepared to allow for individuality but as the Head Teacher said in introducing our new dress code, the common good is what is most important. We hope we can count on your support in this area.



## Congratulations

### Our best wishes to our beautiful, blushing bride;

- Leanne McQuade (Ogg), Teacher of Music

### Our best wishes to our not so beautiful but nevertheless ruggedly handsome bridegroom to be:

- John Swinburne, Principal Teacher of History



### Congratulations to those promoted during the past year;

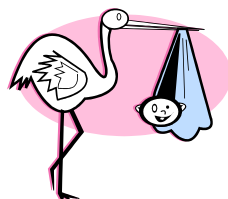
- Allison Briggs to Principal Teacher of Home Economics
- Nikki Dallas to Principal Teacher of Guidance
- Thelma Fyall, Principal Teacher of English
- Deirdre O'Brien to Principal Teacher of Music
- Alex Wallace to Head Teacher

### Our heartfelt thanks to those who have taken extra responsibilities on behalf of the school;

- Marie Chetty, Acting Depute Head Teacher
- Allan Crosbie, Acting Head of English
- Nikki Dallas, Acting Principal Teacher of Guidance
- Claire Fraser, Acting Head of RME and Philosophy
- Frank Gormlie, Acting Head of Drama/Media
- Lorna Greenham, Acting Service Support Officer
- Anne Lyall, Acting Head of Physics
- Deirdre O'Brien, Acting Head of Music

### Congratulations to new Mum

Fiona Osborne, Teacher of Home Economics



Each new school session is a time of transition and change. This year has been no exception and sadly we have had to say goodbye to old friends. However we also get to welcome new ones.

## Comings

- Marco Artime, Learning Assistant
- Iain Barry, ICT Officer
- Steve Corson, PT of Design Technology
- Michael Duke, Service Support Officer
- Cait Duthie, Principal Teacher of Guidance
- Laura Halliday, PT of Modern Studies
- Alison Heron, Teacher of Music
- Joanna Hookam, Learning Assistant
- Nicola Izzat, Teacher of Mathematics
- Mike Johnson, Principal Teacher of RME
- Ross MacLennan, Teacher of English
- Esther Maddox, Learning Assistant
- Jill Pringle, Principal Teacher of Physics
- Carol Robertson, Learning Assistant, Welfare
- Stuart Robertson, Teacher of Chemistry
- Robert Shankland, Teacher of Mathematics
- Carrie Thomson, Receptionist

## Goings

- Jane Armstrong, Learning Assistant, Welfare
- Peter Benicki, Teacher of Mathematics
- Frank Gormlie, Acting PT of Drama & Media
- Angela Ferguson, Clerical Assistant
- Colin Finlayson, Head Teacher
- Shaun Halliday, Service Support Officer
- Tom Johnson, PT of Modern Studies
- Sheila Mann, Teacher of Chemistry
- Lorna McCulloch, Learning Assistant
- Anne McDougall, Principal Teacher of PSE
- Lindsay McGaw, Teacher of RME
- Phil Murray, Teacher of Mathematics
- Gillean Niven, Learning Assistant
- Moira Paton, Library Assistant
- Simon Rhodes, PT of Design Technology
- Colin Robertson, Teacher of Design Technology
- Karen Statham, Clerical Assistant
- Eilidh Swanson, Teacher of Music
- Joanne Wilson, Learning Assistant

## Merry-go-round

- Melanie Dougal, from Classroom Assistant to Clerical Assistant
- Jen Hardie, from Clerical Assistant to Learning Assistant
- Graeme Newall, from Probationer to Teacher of PE
- Marcia Rose from Probationer to Teacher of Drama
- Jennifer Smith from Probationer to Teacher of PE



# James Gillespie's High School

James Gillespie's High School  
Lauderdale Street,  
Edinburgh, EH9 1DD.



Telephone: 0131-447-1900  
Facsimile: 0131-466-7035

Email:  
Admin@jamesgillespies.edin.sch.uk

Website:  
www.jamesgillespies.edin.sch.uk



## JGHS Diary

Tuesday, 9th August 2005	SQA Results issued to candidates
Wednesday, 17th August 2005	Pupils return to school at 08:30hr
Friday, 19th August 2005	A-level results issued
Tuesday, 30th August 2005	School Board and PTA Meetings
Tuesday, 6th September 2005	S1 Parents' Social Evening
Sunday, 11th September 2005	SportsFair at Meadowbank Sports Centre
Wednesday, 14th September 2005	P7 Open Evening
Monday, 19th September 2005	Public Holiday (School closed)
Tuesday, 20th September 2005	In-Service Day, Pupil Holiday
Wednesday, 21st September 2005	Pupils return to school at 08:30 hr
Tuesday, 27th September 2005	School Board and PTA Meetings
Monday, 10th October 2005	Start of S4 Students' Work Experience Week
17th-24th October 2005	Mid-term holiday
Tuesday, 25th October 2005	Pupils return to school at 08:30hr
Thursday 27th October 2005	S1 Fancy Dress Party
Friday, 28th October 2005	S1 Settling-in reports issued
Tuesday, 1st November 2005	School Board and PTA Meetings
Monday, 7th November 2005	S4 Consultation Evening
Tuesday, 8th November 2005	Senior school mathematics challenge
Friday, 18th November 2005	S5/6 Interim Reports issued
Thursday, 24th November 2005	S5/S6 Parents' Consultation Evening
Friday, 2nd December 2005	S3 Interim reports issued
Tuesday, 6th December 2005	School Board and PTA Meetings
Friday, 9th December 2005	S6 Drama Performance
Monday, 19th December 2005	End of Year Concert, Usher Hall, 19:30 hr
Tuesday, 20th December 2005	S1 & S2 Parties
Thursday, 22nd December 2005	School Closes 12:00hr
Thursday, 23rd December 2004	Start of Christmas Holidays

## Our New School Structure

We have changed the structure of the school day, starting with the commencement of our new timetable in June. We have moved from 40 periods of 40 minutes and three different finishing times to a simplified structure of 27 periods per week with the same finishing time each day except Friday when we close early. The new school week is;

**Mon-Thu 08:30—15:35**  
**Fri 08:30—12:00**

This will bring us into line with other secondary schools in Edinburgh.

All students are now members of one of the three new communities we have created; Kyi, Maxwell and Raeburn. The process of choosing names for these communities involved much debate but we feel they represent the spread of human endeavour from politics and humanities, through the sciences and mathematics to the arts. See page two for more information about Aung San Suu Kyi, James Clerk Maxwell and Sir Henry Raeburn.

With this change we have moved away from having a Guidance teacher responsible for each year group to more of a "family" structure where brothers and sisters will be in the same community. This means that you, the parent, will deal with only one of our Guidance teachers thus simplifying your relationship

and communications with the school.

The name of your child's form class is made up of three components. For example, for a student in 2M4, "2" represents the student's year group (S1-S6), the "M" represents community membership (K for Kui, M for Maxwell and R for Raeburn) and the "4" represents the class within the year group and the community (four classes in each). The guidance teachers for each form class are;

Ms. O'Neill	K1 and K2
Mr. Caddell	K3 and K4
Ms. Greig	M1 and M2
Ms. Evans	M3 and M4
Ms. Duthie	R1 and R2
Ms. Dallas	R3 and R4